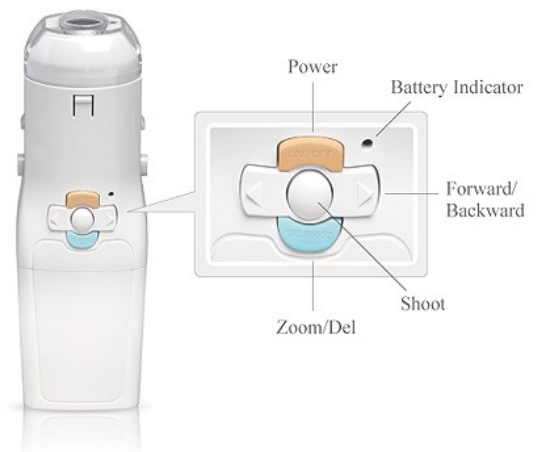


BI@BS2

Mini Colposcope



www.portable-ultrasound-scanner.com

Quality, Professional, Innovational

Mini colposcope BS2

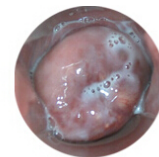
Specifications

Power Supply	DC 4.5V, AAA battery (×3)	
Output Signal	PAL system, AV (video) signal	
Normal Working Conditions	Temperature	: 15°C~30°C
	Humidity	: ≤93%RH
	Pressure	: 700hPa~1060hPa
Storage& Transport Conditions	Temperature	: -20°C~+45°C
	Humidity	: 90%RH
	Pressure	: 700hPa~1060hPa
Weight	About 50g (batteries non-included)	
Dimensions	126×40×34 (L×W×H mm)	
Safety Class	Internal power source, BF type	
Technical Index	Effective range of observation	70mm~100mm
	Angle of observation	20°, permit error -10%, no upper limit
	Resolution	2.5 LP/mm, permit error -10%, no upper limit

Photos



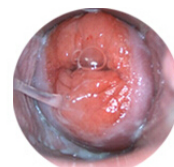
Normal cervix



Vaginitis



Cervical erosion



Cervical erosion



Cervical polyp



Cervical Condyloma

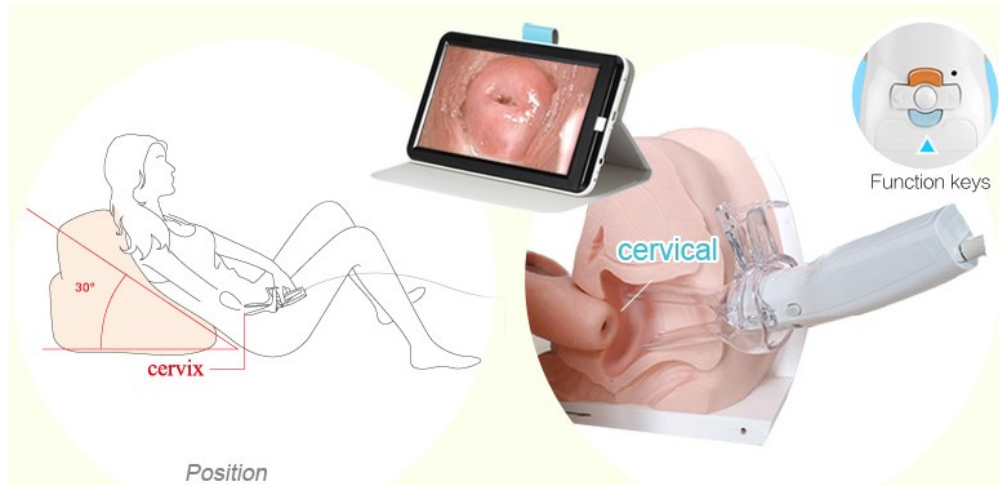
Standard configuration

- Body
- AV video cable
- USB data cable
- Memory card 1G
- User guide
- One size S and one size M of the disposable vaginal speculum

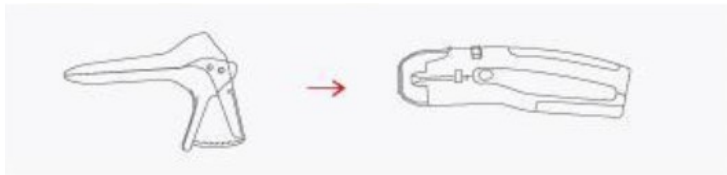
Optional

- 10-inch HD screen
- Disposable vaginal speculum (size S)
- Disposable vaginal speculum (size M)

Usage



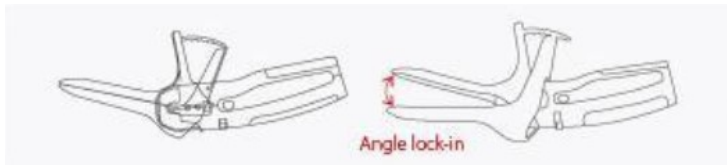
Connection



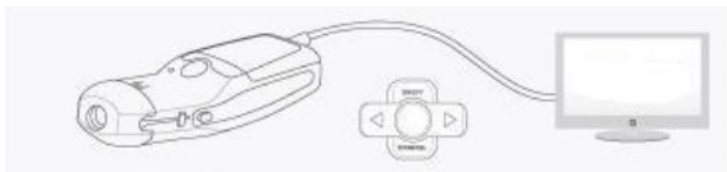
1. Connect the camera with speculum.



2. Connect output to TV/PC, turn on the power.



3. Gently move the speculum into vaginal, open up and lock in.



4. Adjust the focus for accurate and clear observation.

Wuxi Biomedical Technology Co., Ltd. www.portable-ultrasound-scanner.com

Add: Room 408, No.801 Hongqiao road, Wuxi, Jiangsu, China 214072

Tel: 86-510-85572789

Fax: 86-510-85572789

Email: sales@cnbiomedical.com

Mobile phone: 86-13382885910



is a trade mark of Biomedical Technology Co., Ltd. Specifications subject to change without notice.